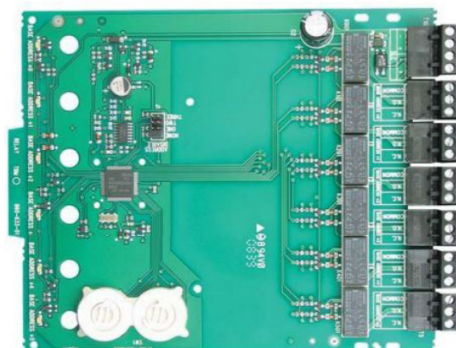


#### FEATURES

- ✓ Individual addresses
- ✓ Common loop input
- ✓ Quick release terminals
- ✓ DGP box ready for 1 to 8 modules
- ✓ Clean contact outputs



#### PRODUCT DESCRIPTION

The SS-XP6R is a 6 Relay Control Module for use with the FireSense 2800 & 3030 Series intelligent alarm system.

A single isolated set of dry relay contacts is provided for each address, which is capable of being wired for either normally open or normally closed for each operation.

Each module has its own address. A pair of rotary code switches is used to set the address of the first module. The remaining modules are automatically assigned to the next five higher addresses. Provisions are included for disabling a maximum of three unused modules to release the addresses to be used elsewhere (you will need to powercycle the module for this to take effect). Each XP6-R module also has panel controlled green LED indicators. The panel can cause the LEDs to blink, latch on, or latch off.

#### TECHNICAL SPECIFICATIONS

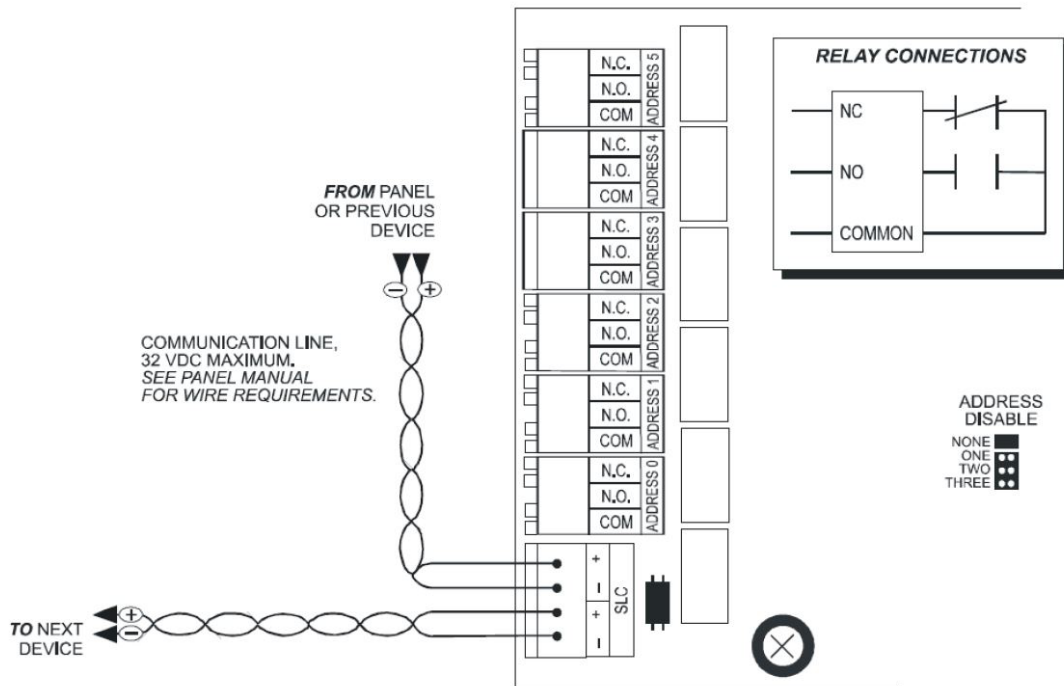
Normal Operating Voltage	15 to 32Vdc
Stand-By Current	1.45mA
Alarm Current	32mA
Temperature Range	0°C to 49°C
Humidity	10 to 85% Non-condensing
Dimensions	173mm H x 148mm W x 26mm D

#### RELAY CONTACT READINGS

Current Rating	Maximum Voltage	Load Description
3A	30Vdc	Resistive
1A	30Vdc	Inductive

### SS-XP6R FlashScan 6 Way Relay Module

#### CONNECTION INFORMATION



#### APPROVALS

- ✓ SSL Approved
- ✓ ActivFire certified - Listing No. afp-1801