

#### FEATURES

- ✓ LED indication
- ✓ FlashScan – 159 per loop
- ✓ Rotary Wheel for ease of addressing
- ✓ Supports compatible two-wire smoke detectors
- ✓ Supervises connection of external power source



#### PRODUCT DESCRIPTION

The SS-FZM1 Zone Module is used to monitor a zone of two-wire smoke detectors. The SS-FZM1 will operate in both CLIP and FlashScan modes.

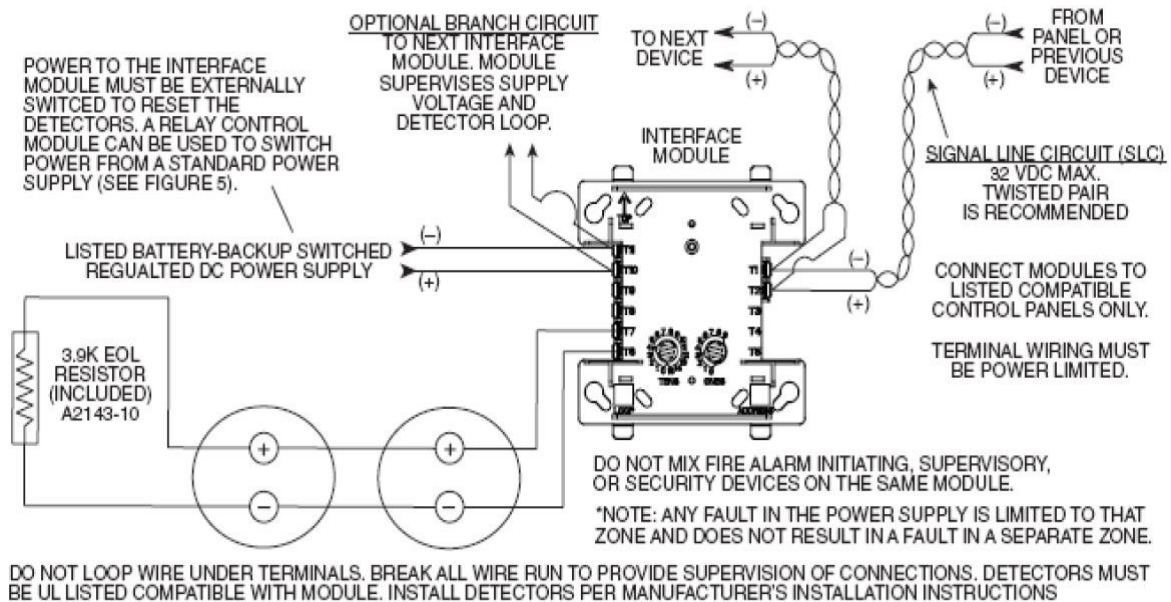
The SS-FZM1 transmits the status (normal, open, or alarm) of one full zone of conventional detectors back to the control panel. All two-wire detectors being monitored must be compatible with the module.

The SS-FZM1 has a panel-controlled LED indicator and can be used to replace SSC-MMX2 modules in existing systems.

#### TECHNICAL SPECIFICATIONS

Nominal Operating Voltage	15 to 32Vdc
Maximum Current Draw	5.1mA (LED on)
Average Operating Current	300µA (1 communication and 1 LED flash every 5 seconds, 3.9k EOL)
EOL Resistance	3.9k Ohms
Temperature Range	0°C to 49°C
Humidity Range	10 to 93% non-condensing
Dimensions	118mm H x 110mm W x 35mm D
Mounting Box (SS-SMB500)	125mm H x 125mm W x 52mm D

#### CONNECTION INFORMATION



#### ORDERING INFORMATION

Product Code	Description
SS-FZM1	Flashscan /clip conventional zone module (FZM-1)

#### APPROVALS

- ✓ SSL Approved
- ✓ ActivFire certified - Listing No. afp-1801
- ✓ SAI Global: Certificate No. SMKH25312

**Note:** Old Style FZM1 module can easily be determined by address wheel position. Old style, one on top of the other and new style are side by side. Old style modules must be upgraded if used with 2800/3030 panels.