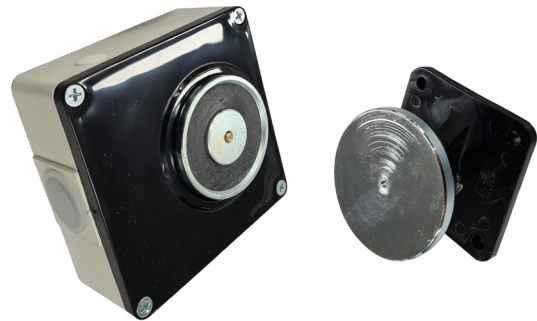


FEATURES

- ✓ 24Vdc (30-65mA)
- ✓ Wall mounting
- ✓ Reversible release button
- ✓ Tapping for 25kgs and 50kgs
- ✓ Spring ejected
- ✓ Anvil included



PRODUCT DESCRIPTION

The MDH1350 is made from high quality di-cast aluminium and steel and finished in black powder coat, which makes them very robust, attractive and compact. They also feature a high quality easy-to-use releasing switch that can be conveniently mounted on either side of the surface mounting unit.

The door holder current consumption, heavy duty anvil and holding capacity from 25 kg to 50kg is adequate to retain fire doors, swinging or sliding on all of your installations.

FireSense also supply a momentary release switch on a standard gang plate to allow release of a fire door from an easily accessible location.

TECHNICAL SPECIFICATIONS

Mounting	Wall
Operating Voltage	24Vdc
Current Consumption	25-45mA
Holding Force	25-50kgs
Housing Structure	Di-cast Aluminium
Protection	IP40
Dimensions Door Holder	94mm x 94mm x 52mm
Dimensions Anvil	65mm x 65mm x 48mm

ORDERING INFORMATION

Product Code	Description
MDH1350	25-50kg door holder - 30-65mA