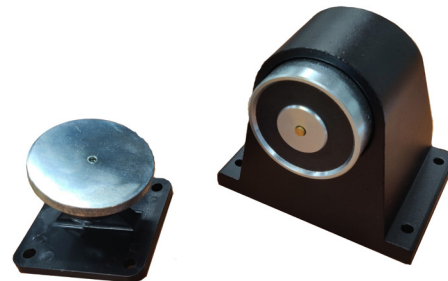


FEATURES

- ✓ Floor-mounting
- ✓ Aluminium structure
- ✓ Holding strength 50kg
- ✓ Release button
- ✓ Spring ejected
- ✓ Anvil included



PRODUCT DESCRIPTION

The electromagnetic door release unit is designed to hold open fire or smoke doors, and then release automatically in response to an emergency. The magnet is mounted in a cast aluminium housing making it extremely robust.

An integrated spring extractor allows any residual magnetism to be overcome, ensuring a fast and reliable door release. All units include a manual release button and a flexible door mounted keeper plate.

TECHNICAL SPECIFICATIONS

Housing Material	ABS/Steel
Operation	Release with no power supply
Connection Type	Wire
Operating Temperature	10°C to 55°C
Protection Degree	IP40
Standard Equipment	Flexible keeper plate, Release button
Voltage	24Vdc
Current	45mA

DIMENSIONS

