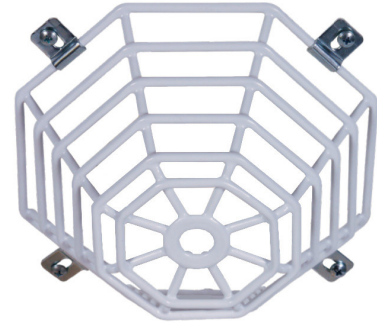


FEATURES

- ✓ Web-like octagon shape of 3mm coated steel wire
- ✓ Extremely difficult to break
- ✓ Fast and easy installation
- ✓ May be spray painted prior to installation to match décor
- ✓ Simple removal for servicing detector
- ✓ Can be fitted with security screws



PRODUCT DESCRIPTION

For use in areas where abuse to smoke detectors is severe.

This was designed to create a web of protection from vandalism and accidental damage. This unit is constructed of 3mm steel wire with corrosion resistant polyester coating.

This wire detector guard is backed by a lifetime guarantee against breakage in normal use. Installation and servicing are easy. Highly recommended for areas where abuse to smoke detectors is severe.

Note: This product is not recommended for use in corrective service applications ie. Holding cells. Please contact FireSense staff for further information.

DIMENSIONS

Diameter at opening	Diameter at point	Height
200mm	120mm	75mm

ORDERING INFORMATION

Product Code	Description
DET-GUARD	Detector Guard - White Wire Style