

FEATURES

- ✓ Recommended for areas where vandalism occurs such as correctional facilities or holding cells
- ✓ Protects smoke detectors from vandalism
- ✓ Constructed from tough, clear polycarbonate
- ✓ Easy to install
- ✓ Aesthetic alternative to steel guards
- ✓ Available for flush or surface mount applications
- ✓ Polycarbonate tested -40°C to 49°C
- ✓ Clear polycarbonate allows easy visibility of alarm LED

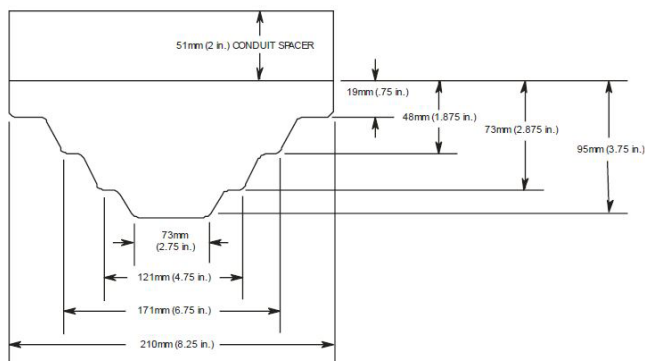


PRODUCT DESCRIPTION

This strong polycarbonate detector guard is easy to install and recommended in areas where severe vandalism is causing false alarms or high maintenance costs to smoke detectors.

The detector guard is supplied with a full installation fixing kit. An optional surface mount kit can be ordered if required.

DIMENSIONS



INSTALLATION

