

FEATURES

- ✓ User friendly menu system
- ✓ Supports multiple languages
- ✓ Single point access to entire VESDAnet system
- ✓ Alarm and fault simulation
- ✓ Displays wiring order
- ✓ Locates communications failures
- ✓ Password security
- ✓ Hand held or remote mounting
- ✓ Automatic Logoff when inactive
- ✓ Backlit LCD screen



PRODUCT DESCRIPTION

The Programmer Module allows direct access to all VESDAnet devices on a VESDA smoke detection system. It allows configuration and status reporting of detectors, displays and interfaces and is required when installing, commissioning and maintaining a VESDA network. By incorporating a user friendly menu, navigation through the comprehensive features of VESDAnet is convenient and simple.

The programmer module is available as a hand-held device (includes a DB15 serial cable) or can be mounted into a LaserPLUS or LaserSCANNER detector, a remote mounting box or a 19 inch sub rack. The two rows of large push buttons enable the user to log ON and navigate through the menu trees to the various command and parameter setting functions. The top row of keys are called “Soft Keys” and are assigned programming options appropriate to the screen being viewed.

Some of the parameters that can be accessed via the programmer include device status reporting, zone number and name allocation, flow normalisation, alarm threshold setting (day, night, weekend), initiation of AutoLearn™, wiring order, relay testing and event log review.

Up to 14 assigned Users or Administrators with an individual 4 digit Personal Identification Number (PIN), and one Distributor, can log onto a VESDAnet system under one of three levels of access which are password protected:

- ✓ User (USR) is only able to view parameters, check status, alarms and reset the system.
- ✓ Administrator (ADM) has access to most commands and programming parameters.
- ✓ Distributor (DST) is the topmost level and has unlimited access to all commands and parameters in the system.
- ✓ Lost PIN numbers can be overcome by obtaining a once only pass number from your VESDA dealer.

The programmer automatically logs OFF when not in use for more than 10 minutes. The user is prompted with a beeping sound at 1 minute and at 15 seconds before log OFF. Any key may be pressed to cancel the automatic log OFF process.

SUPPLY VOLTAGE (18 TO 30 VDC)

	Module	Hand held	Remote
Power (W) Min: @ 24Vdc Max:	1.08W 1.44W	1.68	1.2
Current (mA) Min: @ 24Vdc Max:	45mA 60mA	70mA	50mA
Dimensions (WxHxD):	98mm x 130mm x 30mm	105mm x 135mm x 60mm	140mm x 150mm x 90mm
Connections	Terminal connector to Head Processor Card or to expansion connector on another VESDA device	15 pin D-type connector. VESDAnet cable required to connect to detector or remote VESDAnet socket	RS485 VESDAnet field wiring to screw terminal blocks (0.2-2.5mm ² , 30-12 AWG)

TECHNICAL SPECIFICATIONS

Screen display size	70mm x 37mm Full graphic display Large characters 8 lines, 21 characters per line Adjustable backlit screen with contrast control
Inactivity time out	10 minutes (defaults to log on screen) Beeps at 1 minute and then 15 seconds before logoff
Push button keys	2 rows x 4 keys, each 19mm x 12mm
Security access	3 characters user ID 4 digit Personal Identification Number (PIN) per user
Number of user levels	10 USR 3 ADM 1 DST
Default ID	USR = user (operator level) ADM = Administrator (access most functions) DST = VESDA distributor (access all functions)
Operating conditions	Tested to: -10°C - 55°C Recommended detector ambient: 0°C - 39°C Humidity: 10%-95% RH, non-condensing
Addressed devices	250 VESDA devices maximum
VESDA addressed devices	LaserPLUS - detectors and displays LaserSCANNER - detectors and displays LaserCOMPACT - detectors and displays LaserFOCUS with Vnet card - detectors and displays HLI (high level interface) relay modules - remote relays

System functions accessed	Status of software version
	Descriptive Alarms & Faults
	Smoke & Flow readings
	Push-Button lockout
	Display name (21 characters)
	Alarm Thresholds (Alert, Action, Fire 1 & Fire 2)
	Alarms delays (0-60 seconds)
	Day/Night/Weekend/Holiday Options
	Event Log (up to 18,000 events)
	Zone number and name (21 characters)
	Pipes in use (pipe 1 to 4)
	Aspirator Speed & Flow control
	Confirmation of filter change
	Relay configuration
	Referencing
	Auto Learn™

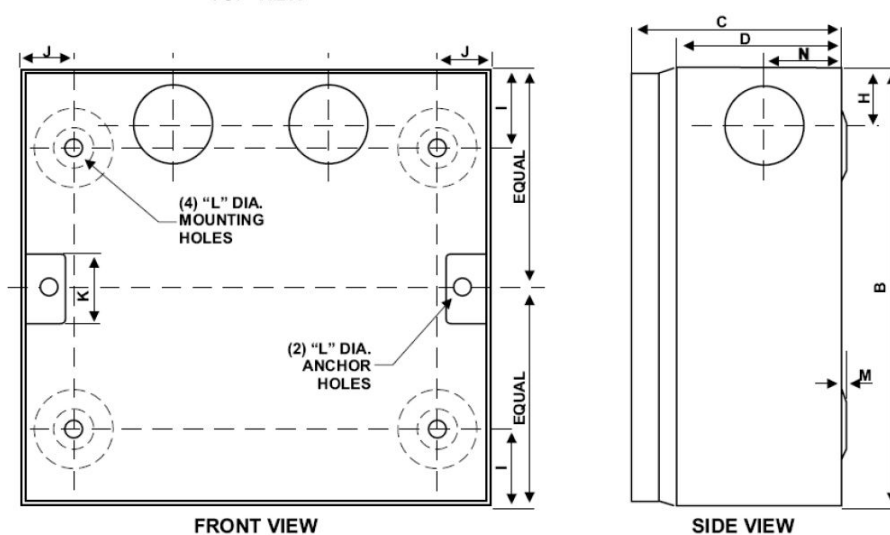
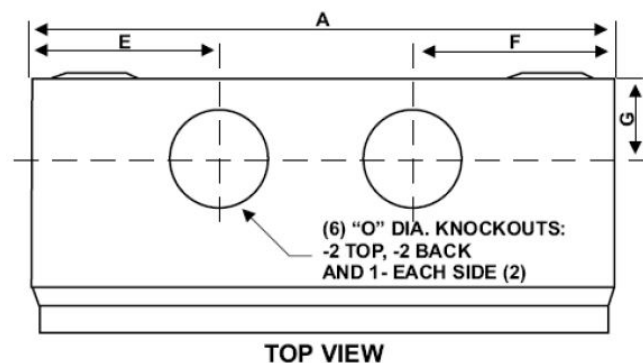
ORDERING INFORMATION

VRT-100	Remote programmer
VSP-012	Recessed mounting kit (optional)
VHH-100	Hand-held programmer
19 inch Sub Rack	Contact FireSense for configuration options

APPROVALS

- ✓ ActivFire certified - Listing No. afp-1083
- ✓ FM Approved
- ✓ ULC
- ✓ UL
- ✓ LPC
- ✓ VdS
- ✓ CCF
- ✓ AFNOR

DIMENSIONS



Dimensions		
	mm	in
A	140	5.5
B	150	5.9
C	70	2.75
D	60	2.36
E	44.5	1.75
F	48	1.9
G	23	0.9
H	25	0.98
I	27.5	1.1
J	16.5	0.65
K	25	0.98
L	6.4	0.25
M	1.6	0.06
N	23	0.91
O	26	1.0

Dimensions		
	mm	in
A	482	19
B	128	5
C	120	4.75
D	21	0.82
E	97.2	3.82
F	6.4	0.25
G	16	0.62
H	14	0.56
I	190	7.50
J	36	1.4
K	7	0.28
L	10	0.39
M	8	0.31
N	440	17.37
O	102	4
P	98.5	4

19" Sub Rack

