

FEATURES

- ✓ Quality robust construction
- ✓ Hidden detection – concealed
- ✓ Tamper proof design
- ✓ New and retrofit friendly
- ✓ Convenient testing and maintenance location via a centrally and remotely mounted detector
- ✓ Standard pipe and capillary tube interfaces
- ✓ Metric and imperial



PRODUCT DESCRIPTION

Aspirating Smoke Detection (ASD) provides the assurance of active sampling and flow monitoring of a protected environment.

A tamper-proof and flush-mount sampling point provides an inconspicuous sampling solution for a myriad of applications that require discrete sampling.

The Tamper Proof Sampling Points (TPSP) provide an elegant addition to modern decor and can both minimize the risk of vandalism and tolerate abuse. They also provide serviceability for dirty and hazardous environments and areas prone to tampering.

Note: This is an indent item, lead times may apply. Enquire within your local FireSense branch.

TAMPER PROOF SAMPLING POINT MODEL 1 (VSP-610 FEATURES)

- ✓ Tamper proof design
- ✓ Serviceable mesh inlet
- ✓ Accommodates standard pipe
- ✓ Affixed by 4 screws to ceiling material
- ✓ Material: stainless steel
- ✓ Pipe Inlet: 25mm
- ✓ Rigid/flexible conduit

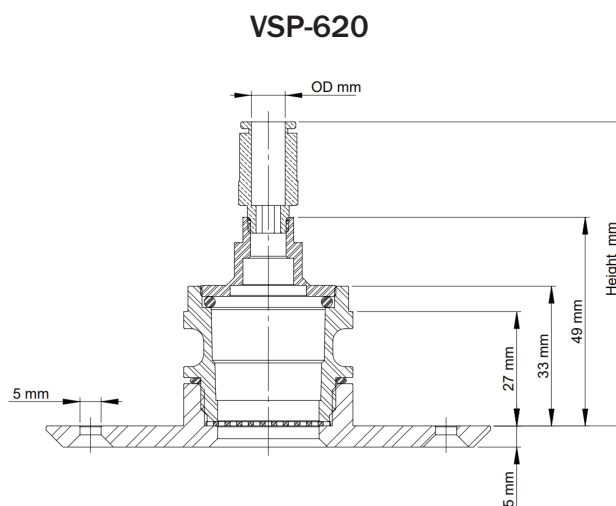
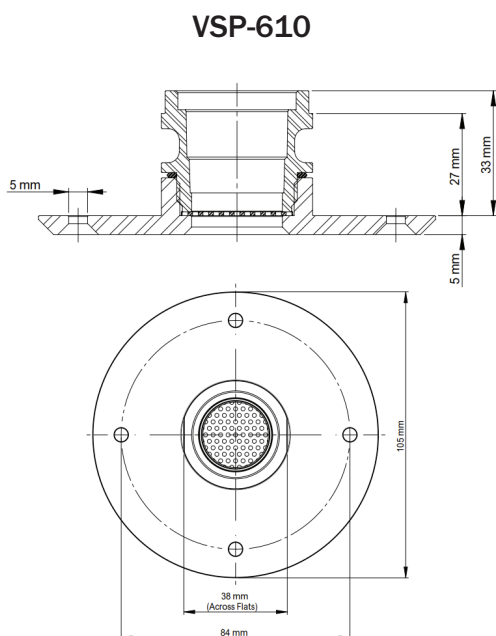
TAMPER PROOF SAMPLING POINT MODEL 2 (VSP-620 FEATURES)

- ✓ Tamper proof design
- ✓ Serviceable mesh inlet
- ✓ Gland fitting to micro-bore (capillary) tubing
- ✓ Material: stainless steel
- ✓ Input: Available in two versions to suit 6mm and 8mm (OD) flexible microbore
- ✓ (Capillary) tubing

APPLICATIONS

- ✓ Luxury accommodation
- ✓ Correctional institutions
- ✓ Detention centers
- ✓ Community residential centers
- ✓ Hospitals
- ✓ Manufacturing & heavy industry

DIMENSIONS



ORDERING INFORMATION

TPSP Metric Pipe	VSP-610
TPSP 6mm capillary	VSP-620-01
TPSP 8mm capillary	VSP-620-02