

#### FEATURES

- ✓ Intelligible voice and superior sound reproduction
- ✓ Ceiling or wall mount
- ✓ Meets virtually any outdoor requirements
- ✓ EN54-24 certified
- ✓ Complies with IP65 standard
- ✓ Comes with capacitor
- ✓ AS ISO 7240-24 Certified
- ✓ SAI Global Certified



#### PRODUCT DESCRIPTION

The LW-PROJ-20WB-7240 is a high-performance 20W voice alarm bidirectional projection loudspeaker. It provides a broad frequency response range, low distortion and high sound pressure level for accurate and intelligible broadcast of evacuation messages and high quality sound reproduction.

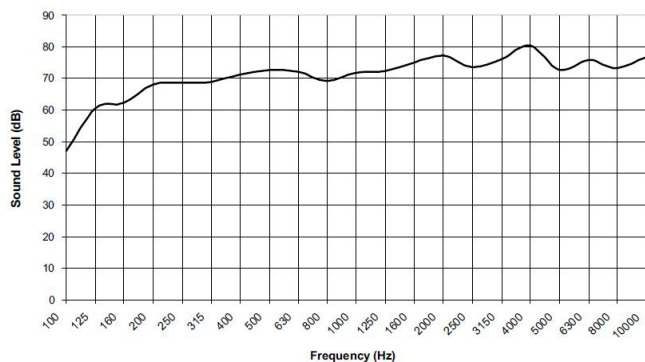
It can be used in indoor, outdoor, dry, or wet applications, providing reliable operations over wide temperature and humidity ranges. The bidirectional loudspeaker is the best choice for applications such as tunnels, galleries and shopping arcades. This voice alarm bidirectional projection loudspeaker complies with BS 5859 part 8 and EN54 part 24.

*Note: This is an indent item, lead times may apply.*

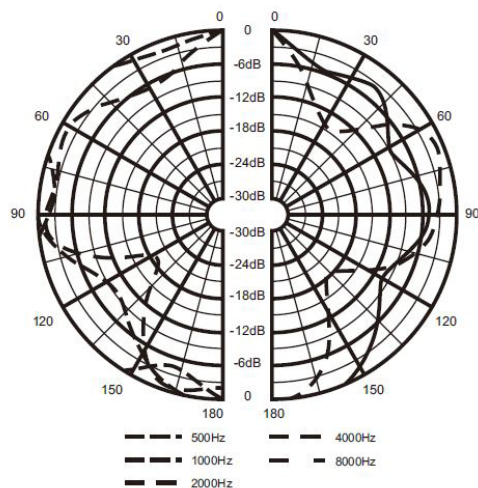
#### TECHNICAL SPECIFICATIONS

Max power	30W
Rated power	20W (10W x 2)
Power taps @ 100V	20W/10W/5W/2.5W
SPL at 20W / 1W (100 Hz-10 KHz,1m)	99dB / 87dB
SPL at 20W / 1W (100 Hz-10 KHz,4m)	87dB / 75dB
Frequency response(-10dB)	150 Hz - 15 KHz
Rated input voltage	100V / 70V
Rated impedance	500 Ω / 1K Ω / 2K Ω / 4K Ω
Connection	Fire-resistant Cable
Dimensions	140mm diameter x 195mm L
Weight	3.23kg
Colour	White (RAL9003)
Material	Aluminium
DC Blocking Capacitor	Yes (2.7uF)

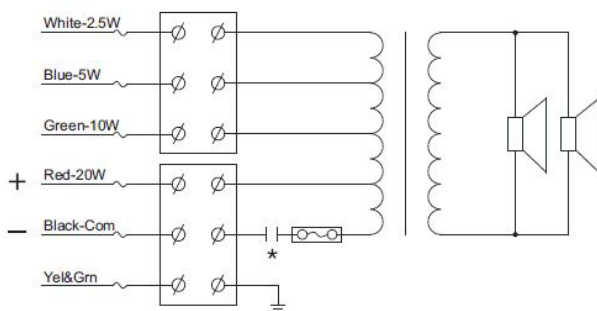
#### FREQUENCY RESPONSE



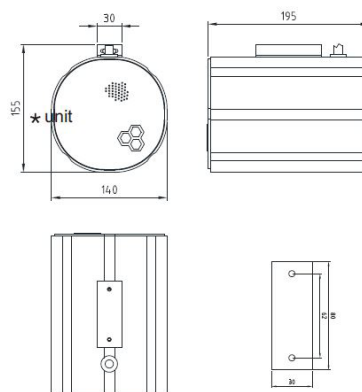
#### POLAR DIAGRAM



#### CIRCUIT DIAGRAM



#### THREE-VIEW DIAGRAM



#### APPROVALS

- ✓ This horn speaker complies with AS/ISO7240.24.
- ✓ SAI Global: Certificate No. SMK40640 (refer to certificate for compliance)