

### MDH-FEM288x Series Wall Mounted/Floor Mounted Magnetic Door Holder With Extension

#### FEATURES

- ✓ Fire rated
- ✓ Up to 25kg holding force
- ✓ 12 and 24Vdc options



Wall Mount

Floor Mount

#### PRODUCT DESCRIPTION

The MDH-FEM288x series of fire and smoke door magnetic holders have a titanium alloy finish and an elegant appearance. They are usually installed on fire and smoke doors in projects where doors are required to be held in the open position for both pedestrian and general traffic. The devices have to be linked into a fire/smoke alarm system.

When an alarm occurs, power is removed from the devices and the doors are returned to the closed position, preventing the spread of fire and/or smoke to other areas. The devices are fire tested to a rating of 4 hours and are supplied as either 12 or 24Vdc.

#### TECHNICAL SPECIFICATIONS

	MDH-FEM2880-12V	MDH-FEM2880-24V*	MDH-FEM2885-12V	MDH-FEM2885-24V*
<b>Mounting Type</b>	Wall mounted	Wall mounted	Floor mounted	Floor mounted
<b>Holding Strength</b>	Up to 25kg	Up to 25kg	Up to 25kg	Up to 25kg
<b>Voltage</b>	12Vdc	24Vdc	12Vdc	24Vdc
<b>Current</b>	160mA	80mA	160mA	80mA
<b>Dimensions</b>	85.3mm H x 71.8mm W x 41.5mm D		88mm H x 59mm W x 62mm D	

#### ORDERING INFORMATION

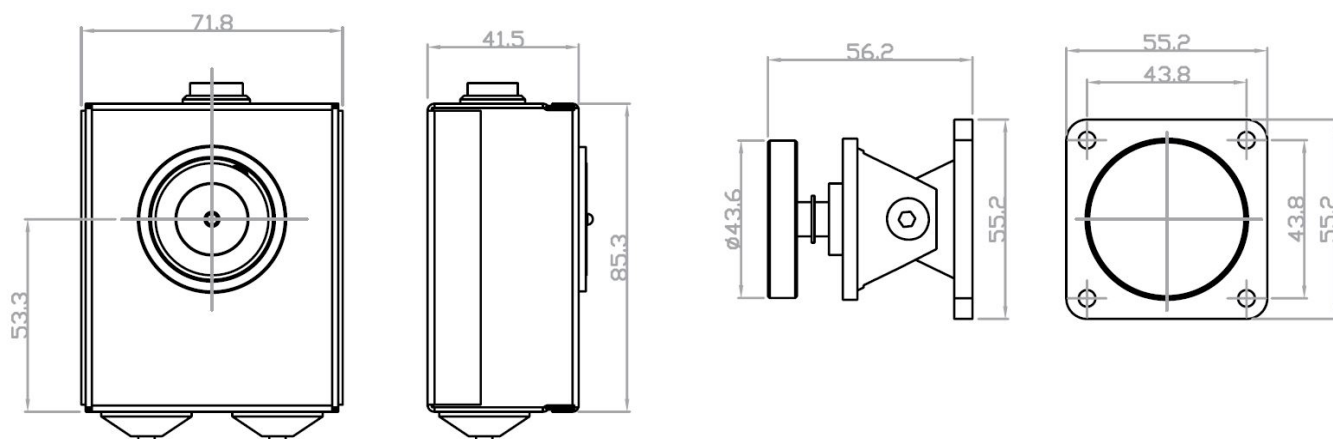
<b>MDH-FEM2880-12V</b>	12Vdc wall mount magnetic door holder. Up to 25kg holding force.
<b>MDH-FEM2880-24V*</b>	24Vdc wall mount magnetic door holder. Up to 25kg holding force.
<b>MDH-FEM2885-12V</b>	12Vdc floor mount magnetic door holder. Up to 25kg holding force.
<b>MDH-FEM2885-24V*</b>	24Vdc floor mount magnetic door holder. Up to 25kg holding force.

\*Indent item - lead times may apply.

### MDH-FEM288x Series Wall Mounted/Floor Mounted Magnetic Door Holder With Extension

#### DIMENSIONS

##### Wall Mount



##### Floor Mount

