

#### FEATURES

- ✓ Intelligible voice and superior sound reproduction
- ✓ Low profile design blends easily into any outdoor or indoor applications
- ✓ IP65 rated
- ✓ Wide operating temperature from -25°C to +55°C
- ✓ AS7240.24 certified
- ✓ SAI Global Certified



#### PRODUCT DESCRIPTION

The FS-PRJ-15-7240 is a high performance 15W sound projector speaker. Its broad frequency range, low distortion and high sound pressure level ensure the delivery of intelligible voice and high quality sound. With its wide operating range of temperature and humidity, it is suitable for use in a large variety of applications.

The stylish low profile design allows it to blend easily with most applications such as train stations, harbour foreshores, factories, campuses, stadiums, foyers and auditoriums.

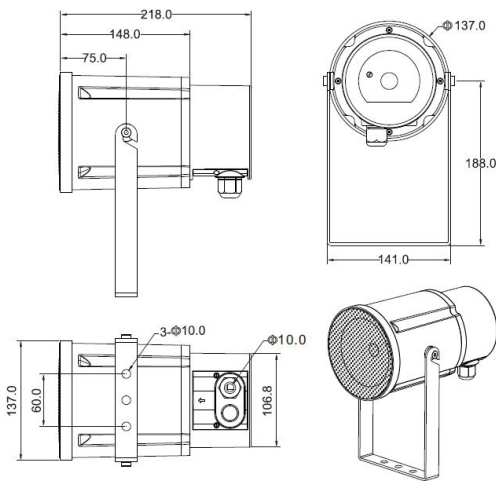
The sound projector can easily be mounted on the wall/ceiling or column with the U-type bracket provided. The projection angle can be adjusted to maximise the coverage at the intended direction. Clamping screws located on the rear junction box are provided to securely fix speaker cabling.

#### TECHNICAL SPECIFICATIONS

Max Power	25W
Rated Power	15W
Power Tapping	0.95W / 1.9W / 3.75W / 7.5W / 15W
SPL (1W/1m) (100Hz~10kHz)	89dB
Sensitivity (1W/4m)	77dB
SPL (15W/4m)	89dB
Frequency Response Range	160Hz~15kHz
Rated Input Voltage	100V/70V
Rated Impedance	10.5KΩ / 5.26KΩ / 2.67KΩ / 1.33KΩ / 0.67KΩ
Dimensions	137mm diameter x 218mm
Weight	1.6kg
Colour	White (RAL 9003)/Black (RAL 9004)
Speaker Size	5" unit
Material	
- Grill, U Bracket	Aluminium powder coated
- Bolts	Stainless steel
- Housing	UL94-5VB ABS

IP Rating	Certified Type B (AS7240.24)/IP33C Complies with IP65
Operating Temperature	-25°C to +55°C
Storage Temperature	-40°C to +70°C
Relative Humidity	Up to 95%

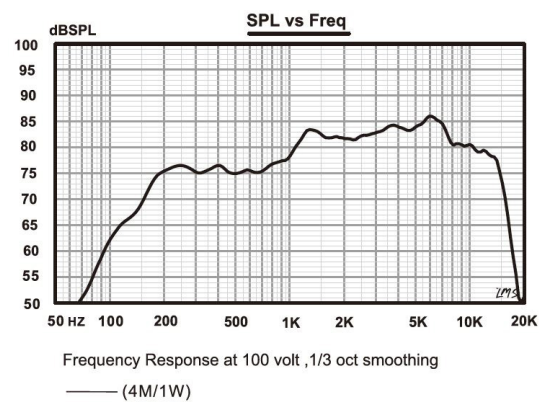
### DIMENSIONS



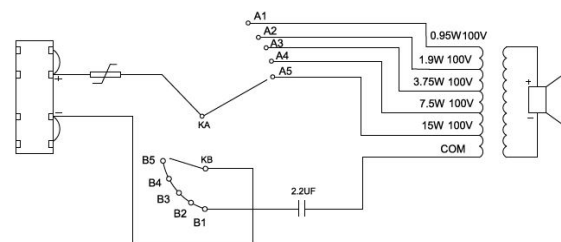
Unit: mm

- \* The reference axis is perpendicular to the centre point of the front speaker
- \* The reference plane is perpendicular to the centre of the reference axis
- \* The horizontal plane is perpendicular to the centre of the reference plane
- \* The spec/data was measured using a standard column mounting in an anechoic chamber as described in EN54-24

### FREQUENCY RESPONSE



### CIRCUIT DIAGRAM



### DISPERSION ANGLES

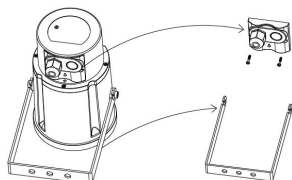
		Horizontal	Vertical
1/3 oct. pink noise	500Hz	170 °	160 °
1/3 oct. pink noise	1k Hz	150 °	210 °
1/3 oct. pink noise	2k Hz	130 °	100 °
1/3 oct. pink noise	4k Hz	70 °	60 °

### WITH TRANSFORMER 100V 70V LINE

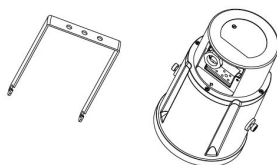
	Tapping					
100V	15W	7.5W	3.75W	1.9W	0.95W	Com
70V	7.5W	3.75W	1.9W	0.95W	0.48W	Com
IMP	0.67K	1.33K	2.67K	5.26K	10.5K	

## INSTALLATION INSTRUCTIONS

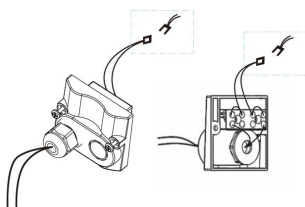
1. Loosen the two screws on the junction box. Remove screw bracket using a hexagonal screwdriver.



2. Mount the bracket into the right position. Connect the loudspeaker to the mounted bracket. Select the intended power tap by adjusting the frequency band.



3. Connect the electric cable to the ceramic terminal block. Connect the male connector from the screw bracket to the female connector from the junction box.



4. Secure screw bracket on the junction box. Adjust angle of the loudspeaker.

## ORDERING INFORMATION

Part Number	SAI Global Part No.	Description	SAI Global Cert No.
FS-PRJ-15-7240	L-VJP15A/EN-WH	White 15W AS7240 Sound Projector Speaker	SMK40640
FS-PRJ-15-7240-BK	L-VJP15A/EN-BK	Black 15W AS7240 Sound Projector Speaker	SMK40640

## APPROVALS

- ✓ AS7240.24 Certified
- ✓ EN54.24 Certified
- ✓ SAI Global: Certificate No. SMK40640