

Upgrade Guide

VERSION 30 FIRMWARE

This guide has been written to assist installing the VeriFire Tools Software, opening an AFP-3030 Config, updating the AFP-3030 firmware (Bootloader & Service Pack V30) and downloading the Config to the AFP-3030.

It is a strong recommendation of the manufacturer that technicians undertake the AFP-3030 Training Course.
Please contact the FireSense office to arrange Training for the AFP-3030.

NOTE: Information relating to versions of Software / Firmware in this document are current at the time of writing.
Please contact FireSense to confirm.

CAUTION: Before performing any of the following procedures to any fire systems, ensure the output to the Fire Brigade and all the gas releasing heads on the system have been isolated.

CAUTION: Before performing any downloads to the fire system, it is strongly recommended that a backup of the current panel configuration is uploaded to the PC using VeriFire Tools.

NOTE: Download operations that change the basic program of the control panel must be performed by responsible and authorised service personnel in attendance at the panel or onsite. After downloading a program, the panel(s) must be tested in accordance with local standards.

NOTE: Files referenced in images are indicative only and may not reflect the latest version.

NOTE: V30 Boot code and Service now uses a signature (.sig) file instead of the "hex file" used on V28 and earlier panel firmware. The signature file is a secure encrypted firmware that the panel recognises as a valid firmware. The signature file is supported in VeriFire Tools V12.00 and beyond.

NOTE: To program an Australian AFP-3030 using VeriFire Tools V12.00 you will need to apply the Notifier Australian brand configuration key (*Encrypted_NotifierAustralian.ebk*).

OVERVIEW

- Download VeriFire Tools V12.00 from the FireSense website.
NB: All software is password protected. Please follow prompts to request password.
- Install VeriFire Tools V12.00 on PC
- Open VeriFire tools V12.00 with Notifier brand configuration key applied.
- Connect PC to AFP-3030 via USB Cable
- Import Existing Config / Upload existing database from panel and confirm firmware version.
 - Save a backup copy of panel database and then upgrade each node to V30.
 - If V23/V24; Download V30 Bootloader application to panel; CPU2_BOOT_030_000_002.sig
 - If V23/V24/V26/V27/V28 Download V30 Service Pack to panel; SPAK_030_000_003_PROD.sig
- Download upgraded V30 panel database.
- Verify panel correct operation.

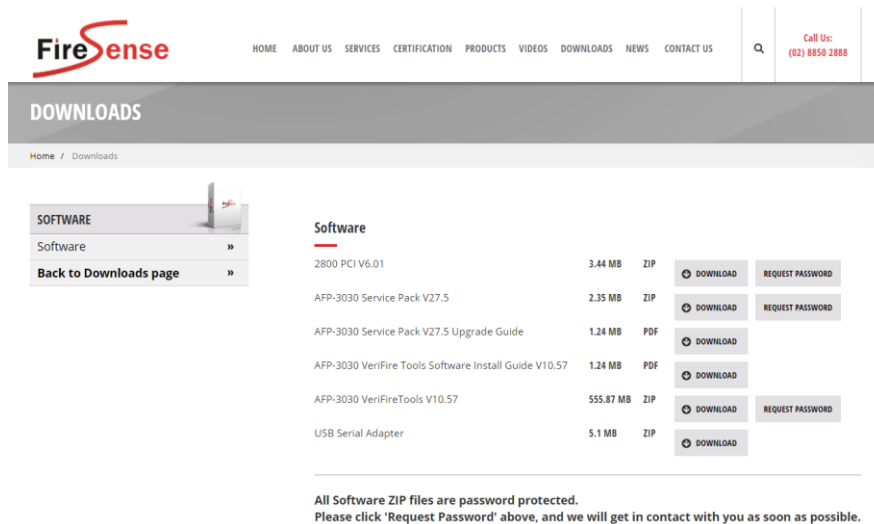
		NSW Head Office	Victoria Branch	Queensland Branch
FireSense Pty Ltd	Postal Address:	18-20 Brookhollow Ave	4/297 Ingles St	2/225 Queensport Rd Nth
ATF FireSense Trust		Baulkham Hills	Port Melbourne	Murarie
		NSW 2153	VIC 3207	QLD 4172
ABN: 11 720 788 915	PO Box 7026			
	Baulkham Hills BC			
	NSW 2153	Ph: (02) 8850 2888	Ph: (03) 9646 4557	Ph: (07) 3890 8842
www.firesense.com.au	Australia	Fax: (02) 8850 2999	Fax: (03) 9646 4558	Fax: (07) 3890 8894

Step 1

A copy of VeriFire Tools & Firmware is supplied on a USB Drive with each FireSense AFP-3030 panel.

An alternative is to download from the Downloads section of www.firesense.com.au.

NB: All software is password protected. Please follow prompts to request password.



The screenshot shows the FireSense website's 'Downloads' section. It features a navigation bar with links like HOME, ABOUT US, SERVICES, CERTIFICATION, PRODUCTS, VIDEOS, DOWNLOADS, NEWS, and CONTACT US. A 'Call Us: (02) 8850 2888' button is also present. The 'DOWNLOADS' section is highlighted, and a sidebar on the left contains a 'SOFTWARE' link and a 'Back to Downloads page' button. The main content area lists several software items for download:

Software	Size	Format	Download Link	Request Password Link
2800 PCI V6.01	3.44 MB	ZIP	DOWNLOAD	REQUEST PASSWORD
AFP-3030 Service Pack V27.5	2.35 MB	ZIP	DOWNLOAD	REQUEST PASSWORD
AFP-3030 Service Pack V27.5 Upgrade Guide	1.24 MB	PDF	DOWNLOAD	
AFP-3030 VeriFire Tools Software Install Guide V10.57	1.24 MB	PDF	DOWNLOAD	
AFP-3030 VeriFireTools V10.57	555.87 MB	ZIP	DOWNLOAD	REQUEST PASSWORD
USB Serial Adapter	5.1 MB	ZIP	DOWNLOAD	

Below the table, a note states: 'All Software ZIP files are password protected. Please click 'Request Password' above, and we will get in contact with you as soon as possible.'

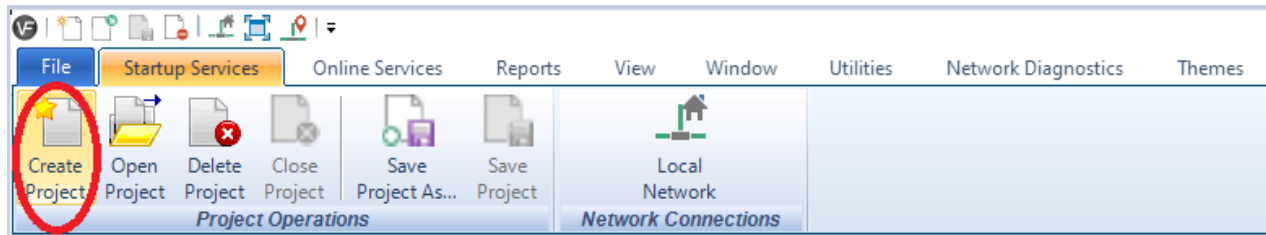
Step 2

Install the current version of Verifire Tools (V12.00) as shown in the [‘VeriFire Tools Software Install Guide’](#).

		NSW Head Office	Victoria Branch	Queensland Branch
FireSense Pty Ltd	Postal Address:	18-20 Brookhollow Ave	4/297 Ingles St	2/225 Queensport Rd Nth
ATF FireSense Trust		Baulkham Hills	Port Melbourne	Murarie
		NSW 2153	VIC 3207	QLD 4172
ABN: 11 720 788 915	PO Box 7026			
	Baulkham Hills BC			
	NSW 2153	Ph: (02) 8850 2888	Ph: (03) 9646 4557	Ph: (07) 3890 8842
www.firesense.com.au	Australia	Fax: (02) 8850 2999	Fax: (03) 9646 4558	Fax: (07) 3890 8894

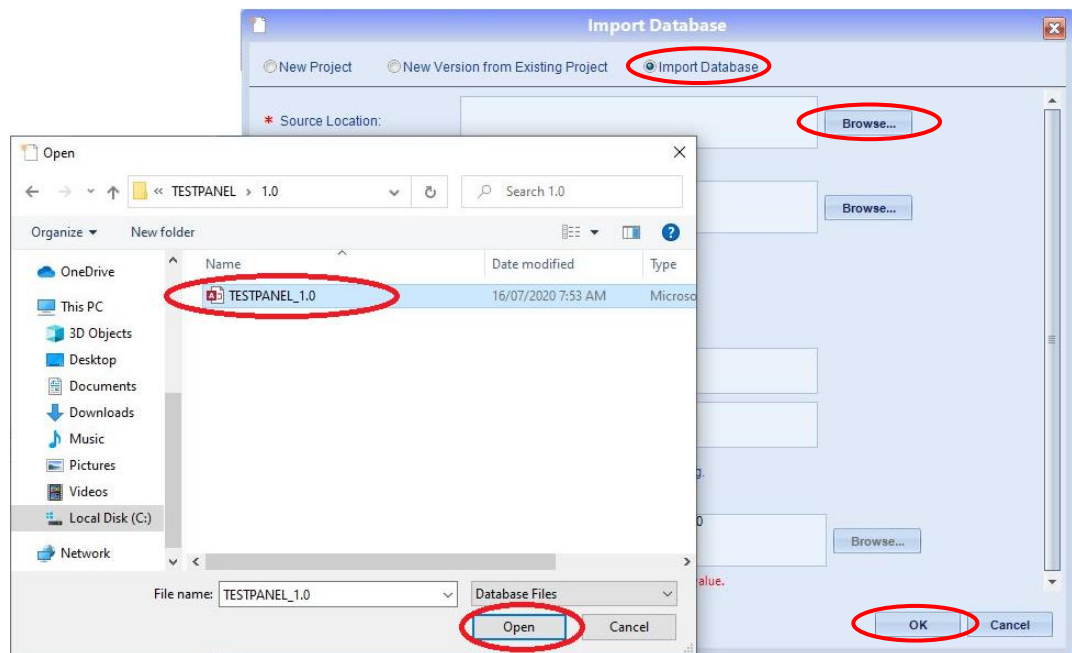
Step 3

Open up Verifire Tools V12.00 and click 'Create Project'.



Step 4

Click 'Import Database' and click Browse. Select the Config Database (.acddb) and click 'Open', then click 'OK' (a 'base' file will generally be supplied on a USB drive with the 3030 Fire Panel)



		NSW Head Office	Victoria Branch	Queensland Branch
FireSense Pty Ltd	Postal Address:	18-20 Brookhollow Ave	4/297 Ingles St	2/225 Queensport Rd Nth
ATF FireSense Trust		Baulkham Hills	Port Melbourne	Murarie
		NSW 2153	VIC 3207	QLD 4172
ABN: 11 720 788 915	PO Box 7026	Ph: (02) 8850 2888	Ph: (03) 9646 4557	Ph: (07) 3890 8842
	Baulkham Hills BC	Fax: (02) 8850 2999	Fax: (03) 9646 4558	Fax: (07) 3890 8894
www.firesense.com.au	NSW 2153			
	Australia			

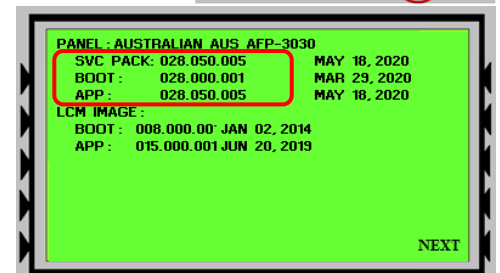
Step 5

On the 3030/NCA2 panel, press the 'Lamp' Test button (below 'Next' button) -

Note that some firmware versions may require the button to be held.



- If the firmware is 30, skip the next steps and go to **Step 18**.
- If the firmware is 28 or earlier, proceed to the next step.



FIRMWARE UPGRADE

- A Service Pack download can be done to a single 3030 / multiple 3030s simultaneously **OR** a single NCA / multiple NCAs simultaneously (*Distributed Download cannot be done between a 3030 and an NCA*).
- The software will also load the relevant software into the LCMs / LEMs so these will need to be connected and programmed when the update is being performed.

If upgrading from an existing 2800, versions of the LCM/LEM's need to be checked. If this is the case, please contact FireSense Technical Support. (NOTE: LCM V7.00 cards are not upgradeable)

NOTE: Network sites require further consideration as there may be compatibility issues when upgrading all panels on site to Version 30. Certain panels may have incompatible hardware which cannot be upgraded. Please discuss with FireSense Technical Support to determine the best course of action.

NOTE: Version 30 software requires VeriFire Tools 12.00 or above.
It is compatible with CPU2-3030PCD Rev D hardware and above.

NOTE: The Boot Code and Service Pack download can take over 30 mins (depending on how many nodes / loops etc). Please be aware that the system will remain offline for this period.

NOTE: Existing SCS-8A may need to be upgraded to the latest firmware for all features of V30 to operate correctly. Please discuss with FireSense Technical Support to determine the best course of action.

NOTE: Confirm password for all nodes is known before upgrading site firmware.

NOTE: Upgrading to a different Version (eg. V27.5 to V30) requires some preparation of the configuration prior to upgrading the firmware within the panel. Please ensure that the password is known and that the existing software is on hand prior to downloading the new firmware!

A panel database may only be uploaded when the Service Pack version matches the Database version.

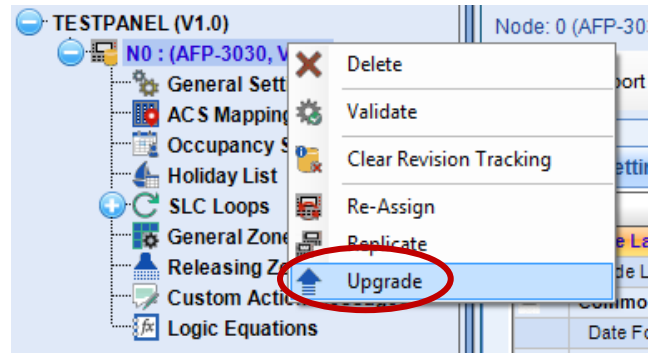
IMPORTANT: Do not disconnect the cable to the Fire Panel, OR allow the computer to turn off / go to standby OR for the Fire Panel to lose power during the firmware transfer and configuration.

NSW Head Office		Victoria Branch	Queensland Branch
FireSense Pty Ltd ATF FireSense Trust	Postal Address: 18-20 Brookhollow Ave Baulkham Hills NSW 2153	4/297 Ingles St Port Melbourne VIC 3207	2/225 Queensport Rd Nth Murarrie QLD 4172
ABN: 11 720 788 915	PO Box 7026 Baulkham Hills BC NSW 2153	Ph: (02) 8850 2888 Fax: (02) 8850 2999	Ph: (07) 3890 8842 Fax: (07) 3890 8894
www.firesense.com.au	Australia		

Step 6

Upgrade each node's configuration by right-clicking the Node and clicking 'Upgrade'.

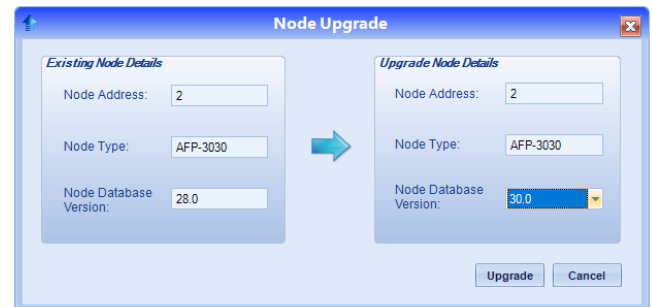
A backup copy of the database will be provided in **C:\VFT\VeriFire Tools 12.00\Bin\Databases\Backup Project Versions**.



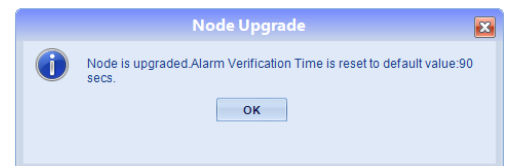
Step 7

Click the drop down box to change the Database to Version 30.

Repeat Steps 6 and 7 for each node in the project that is being upgraded.

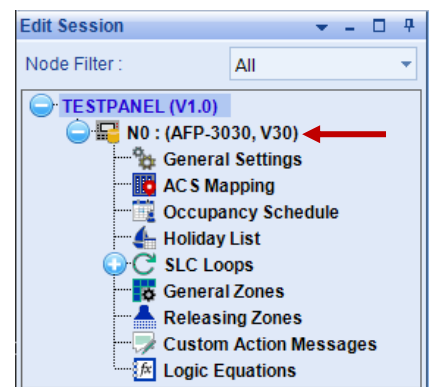


Before upgrading review existing Alarm Verification Timers.



Step 8

Confirm each node in the project is now V30.



Now that the project has been upgraded, the firmware can be downloaded into each node.

		NSW Head Office	Victoria Branch	Queensland Branch
FireSense Pty Ltd	Postal Address:	18-20 Brookhollow Ave	4/297 Ingles St	2/225 Queensport Rd Nth
ATF FireSense Trust		Baulkham Hills	Port Melbourne	Murarie
		NSW 2153	VIC 3207	QLD 4172
ABN: 11 720 788 915	PO Box 7026			
	Baulkham Hills BC			
	NSW 2153			
www.firesense.com.au	Australia	Ph: (02) 8850 2888	Ph: (03) 9646 4557	Ph: (07) 3890 8842
		Fax: (02) 8850 2999	Fax: (03) 9646 4558	Fax: (07) 3890 8894

Step 9

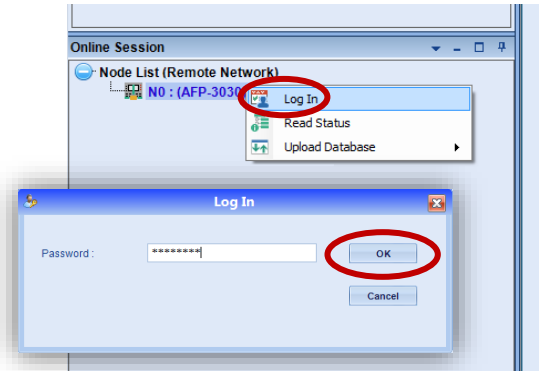
Connect USB cable to CPU or Network Card then click 'Local Network'.



Step 10

Click on the Node in the 'Online Session' window.
Right click on the node and select 'Login'.

Enter the Panel Password then Click 'OK'.
(The default Password is '00000000').



- If the panel firmware is currently V26 or higher, skip the next steps and go to **Step 12**.
- If the panel firmware is V24 or earlier, proceed to the next step.
Refer to Step 5 if unsure of panel firmware.

		NSW Head Office	Victoria Branch	Queensland Branch
FireSense Pty Ltd	Postal Address:	18-20 Brookhollow Ave	4/297 Ingles St	2/225 Queensport Rd Nth
ATF FireSense Trust		Baulkham Hills	Port Melbourne	Murarie
		NSW 2153	VIC 3207	QLD 4172
ABN: 11 720 788 915	PO Box 7026			
	Baulkham Hills BC			
	NSW 2153			
	Australia			
www.firesense.com.au		Ph: (02) 8850 2888	Ph: (03) 9646 4557	Ph: (07) 3890 8842
		Fax: (02) 8850 2999	Fax: (03) 9646 4558	Fax: (07) 3890 8894

Step 11

Select 'Download to Node'.

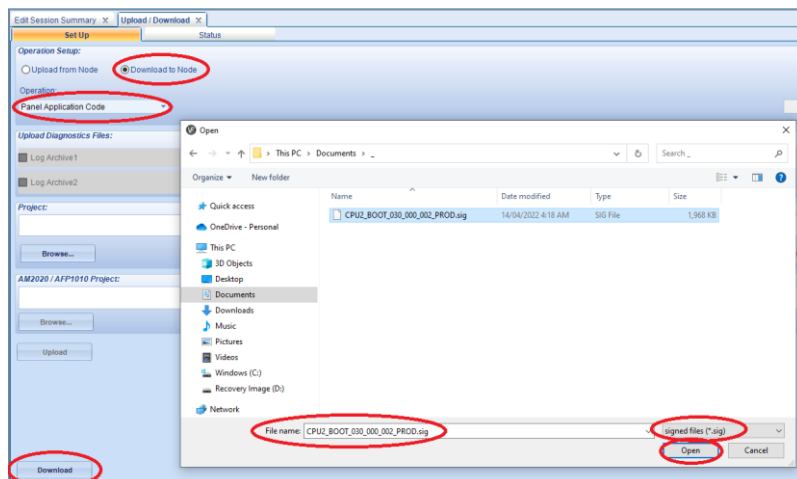
Select 'Panel Application Code' from the dropdown list.

On 'Project', click, 'Browse'.

Set file filter to **signed files (*.sig)**

Select the Boot File supplied (.sig)

Click 'Open'.



The Boot File can be found on USB supplied, or www.firesense.com.au via the Downloads section.

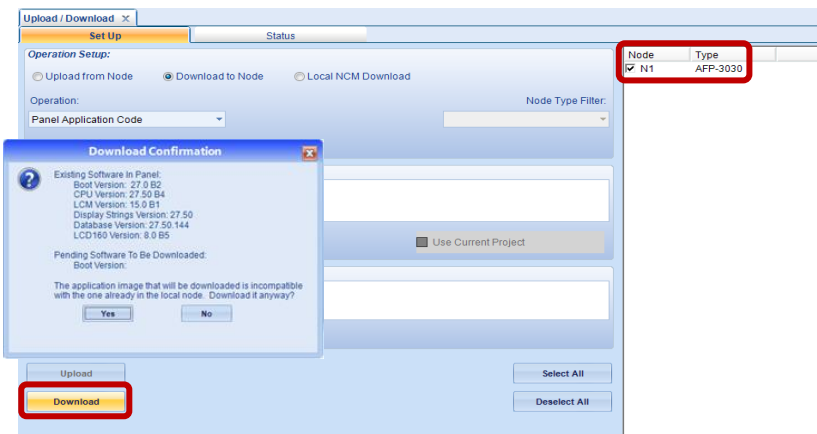
Step 16

Once the file has been selected, select the panels to be upgraded, then click 'Download.'

A confirmation screen will indicate that the software is not compatible, and the file transfer will commence.

NOTE:

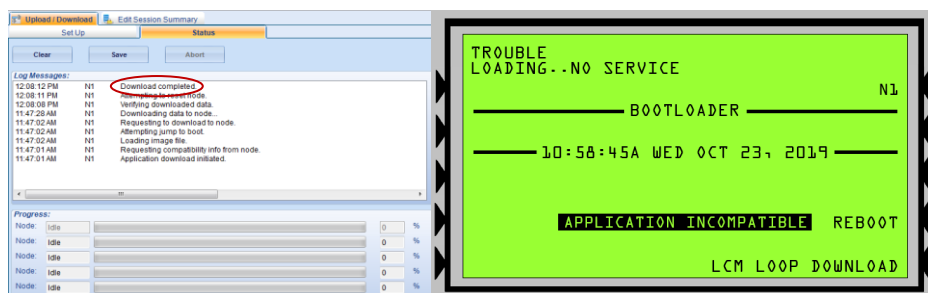
The Boot Code download takes approx. 10-15mins



IMPORTANT: Do not disconnect the cable to the Fire Panel, or allow the computer to turn off / go to standby OR for the Fire Panel to lose power during the firmware transfer.

Once download complete, the Log will show 'Download Completed'.

Once download installed node display will show 'APPLICATION INCOMPATIBLE'.



NOTE:

For 3030 CPU's without a display, the fault 'N# Loading - No Service...' will be present on the NCA. Wait for node to appear in Online Session in Verifire Tools before proceeding.

		NSW Head Office	Victoria Branch	Queensland Branch
FireSense Pty Ltd	Postal Address:	18-20 Brookhollow Ave	4/297 Ingles St	2/225 Queensport Rd Nth
ATF FireSense Trust		Baulkham Hills	Port Melbourne	Murarie
	PO Box 7026	NSW 2153	VIC 3207	QLD 4172
ABN: 11 720 788 915	Baulkham Hills BC			
	NSW 2153	Ph: (02) 8850 2888	Ph: (03) 9646 4557	Ph: (07) 3890 8842
www.firesense.com.au	Australia	Fax: (02) 8850 2999	Fax: (03) 9646 4558	Fax: (07) 3890 8894

Step 12

Select 'Download to Node',
from the drop-down list, select 'Service Pack'.

Click 'Browse' to select the Firmware File (.sig).
Select the Service Pack and click 'Open'.

The Service Pack 30 can be found on USB
supplied, or via the Downloads section of
www.firesense.com.au

IMPORTANT:

When upgrading the panel's service pack, the Loop cards must be connected prior to doing the download.
If loop card firmware does not match the panel expected firmware there will be a "SOFTWARE MISMATCH" fault.

Once the file has been selected, select the panels which require updating,
then click 'Download'.

IMPORTANT: Do not disconnect the cable to the Fire Panel, OR allow the
computer to turn off / go to standby OR for the Fire Panel to lose power
during the firmware transfer.

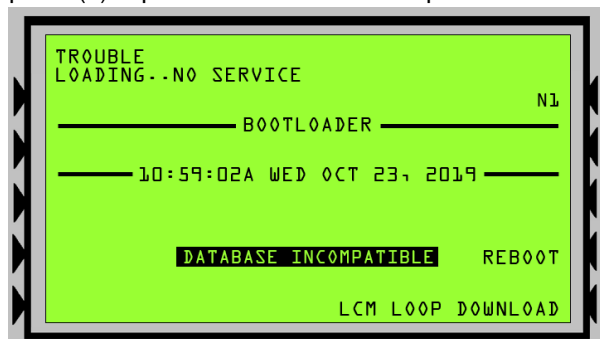
When the file transfer has finished, the Log will show that the Download has
completed.

Once the Download has completed, the laptop can be disconnected.

The panel will then continue to update the various components on its own.

Once each panel's firmware has been updated, the panel will reboot and
display 'Database Incompatible'.

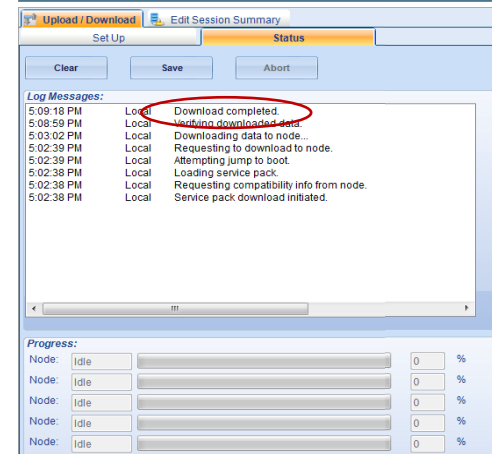
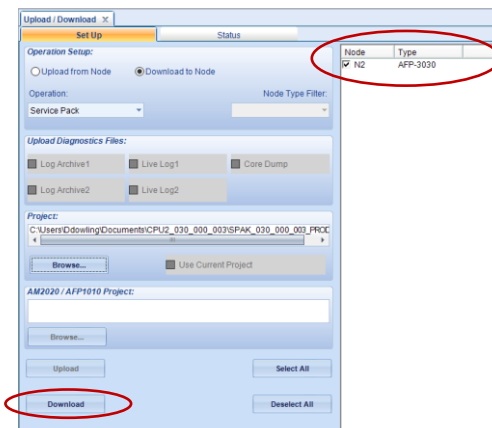
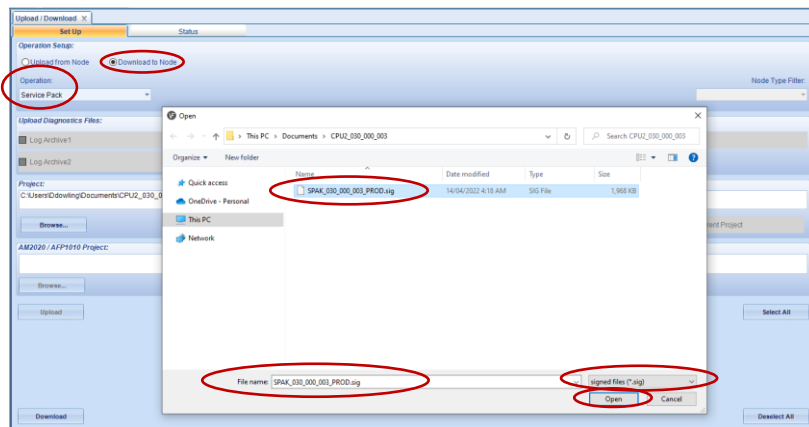
The configuration then needs to be re-downloaded into the respective
panel(s) – proceed to the next step.



NOTE:

For CPU's without a display, the fault 'N# Loading – No Service...' will be present on the NCA.

Wait until the node appears in the online session in VeriFire Tools before proceeding.



		NSW Head Office	Victoria Branch	Queensland Branch
FireSense Pty Ltd	Postal Address:	18-20 Brookhollow Ave	4/297 Ingles St	2/225 Queensport Rd Nth
ATF FireSense Trust		Baulkham Hills	Port Melbourne	Murarie
		NSW 2153	VIC 3207	QLD 4172
ABN: 11 720 788 915	PO Box 7026			
	Baulkham Hills BC			
	NSW 2153			
www.firesense.com.au	Australia	Ph: (02) 8850 2888	Ph: (03) 9646 4557	Ph: (07) 3890 8842
		Fax: (02) 8850 2999	Fax: (03) 9646 4558	Fax: (07) 3890 8894

Step 13

The 'Revision Tracking' may need to be cleared to allow the file to be transferred – To do this, right click on the Node in the 'Edit Session' window and select 'Clear Revision Tracking'.

Please refer to the 'Revision Tracking' Document (also on USB) for additional information.

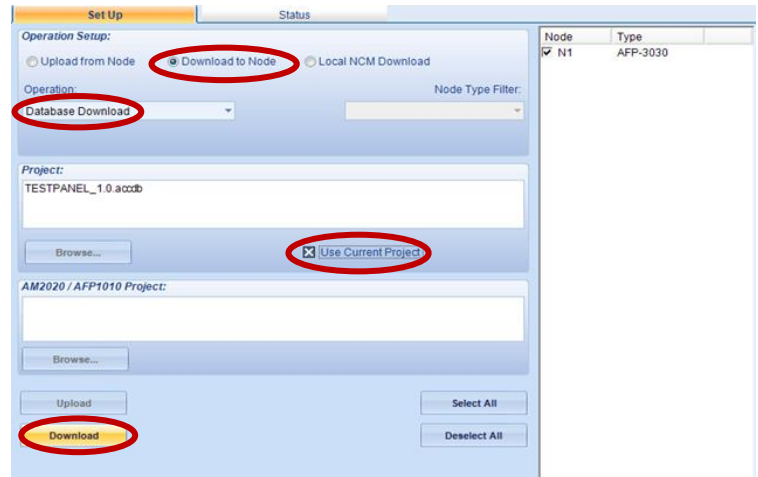
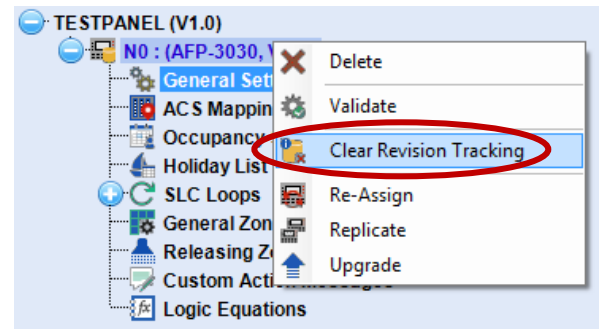
Step 14

Connect to 3030/NCA node (refer to Steps 9 and 10 if unsure how to connect to node).

Step 15

Select 'Download to Node' then, Select 'Database Download' from drop-down menu Click 'Browse' to select a particular database file or, Select 'Use Current Project' (if config already open). Click 'Download'.

The Validation Tool will then confirm the file is OK prior to downloading to the panel.



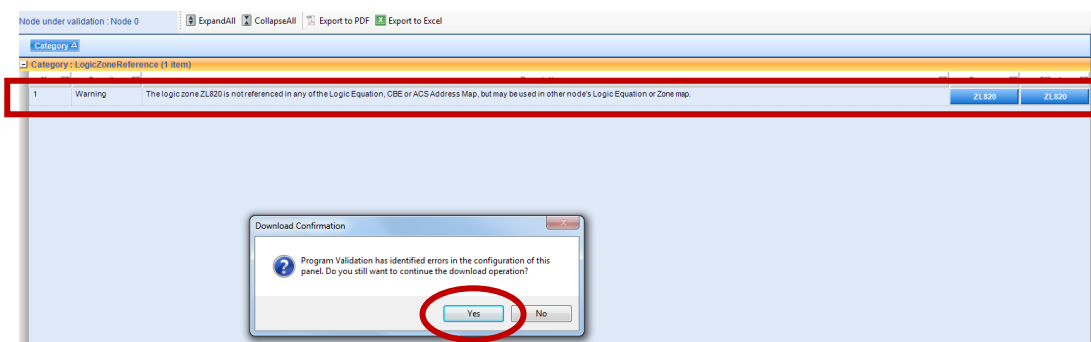
Please note: The Validation Tool may pick up some errors and come up with a notification: "Program Validation has identified errors in the configuration of this panel".

It may bring up some Warnings / Errors such as:

"The detector L1D1 does not turn on an output through general zone Z1" OR "The logic zone is not referenced..." etc.

Some of these 'issues' aren't a problem – the validation tool is just highlighting that additional functionality may have not been added. Review the list to confirm that the identified warnings / errors are acceptable. If so, click 'Yes' to continue downloading.

****If the Validation Tool finds a critical 'error' the database may not be able to download to the panel. Please check the config is correct and after fixing the issues, try downloading again.****



		NSW Head Office	Victoria Branch	Queensland Branch
FireSense Pty Ltd	Postal Address:	18-20 Brookhollow Ave	4/297 Ingles St	2/225 Queensport Rd Nth
ATF FireSense Trust		Baulkham Hills	Port Melbourne	Murarie
		NSW 2153	VIC 3207	QLD 4172
ABN: 11 720 788 915	PO Box 7026			
	Baulkham Hills BC			
	NSW 2153	Ph: (02) 8850 2888	Ph: (03) 9646 4557	Ph: (07) 3890 8842
www.firesense.com.au	Australia	Fax: (02) 8850 2999	Fax: (03) 9646 4558	Fax: (07) 3890 8894

The Downloader may see a discrepancy between the existing config and the new config.

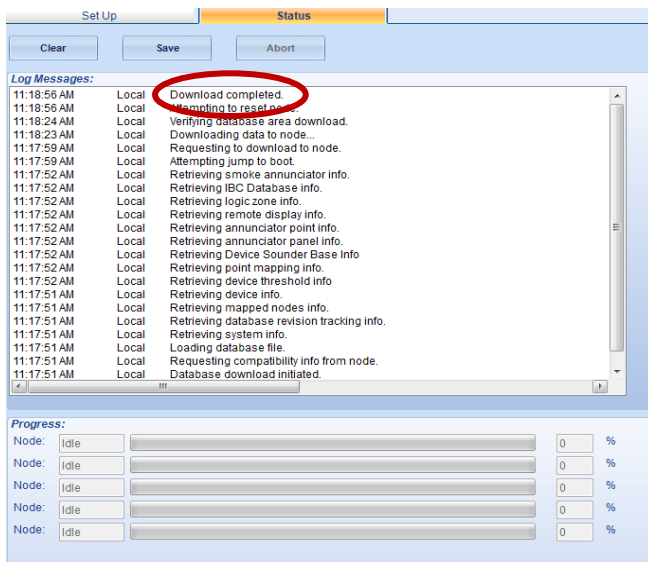
If this is an existing panel, ensure that the latest version of the config is being used to avoid overwriting changes made by another technician.

Once you have confirmed you are about to download the correct file, Click 'Yes' to Continue.

If this is an existing panel, ensure that the latest version of the config is being used to avoid overwriting changes made by another technician.



The system will then automatically reboot.



The firmware in the panel has now been upgraded to V30.

		NSW Head Office	Victoria Branch	Queensland Branch
FireSense Pty Ltd	Postal Address:	18-20 Brookhollow Ave	4/297 Ingles St	2/225 Queensport Rd Nth
ATF FireSense Trust		Baulkham Hills	Port Melbourne	Murarrie
		NSW 2153	VIC 3207	QLD 4172
ABN: 11 720 788 915	PO Box 7026			
	Baulkham Hills BC			
	NSW 2153	Ph: (02) 8850 2888	Ph: (03) 9646 4557	Ph: (07) 3890 8842
www.firesense.com.au	Australia	Fax: (02) 8850 2999	Fax: (03) 9646 4558	Fax: (07) 3890 8894