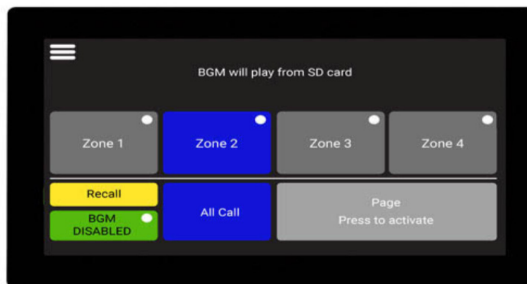


#### FEATURES

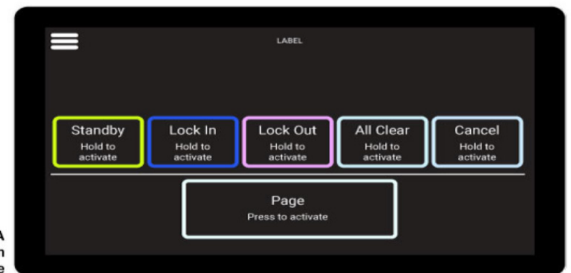
- ✓ Touch control paging with pre & post announcement chime options.
- ✓ Adjustable microphone automatic gain control (AGC).
- ✓ High quality electret microphone with high ambient noise control and feedback rejection.
- ✓ Adjustable backlight brightness and dimmed brightness levels with selectable timeout period.
- ✓ All glass front bezel for a stylish finish for any room.
- ✓ Connects via economical Cat5e UTP cabling.



NEW



4 Zone Mode  
(A 4270, A 4489A  
etc.)



A 4595A  
Lockdown  
Mode

#### PRODUCT DESCRIPTION

This 7" touchscreen LCD paging console provides paging control to a host of associated products. No matter which product it is connected to, the console provides a central point of control for paging activation with useful features in-built such as pre and post announcement chimes, adjustable automatic microphone gain (AGC) control and output level control.

On designated products the settings menu allows for selection of button colour theme, zone labelling, input and installer renaming. It also allows you to adjust haptic button feedback, screen sleep settings, backlighting/dimming timers. To facilitate simpler paging, it offers the ability to record announcements, provide announcement playback, store and recall multizone selections.

The features available on the console vary according to what device it is connected to. A guide to these is available in the following section.

**ADDITIONAL FEATURES FOR A4450**

---

- ✓ Touch control of zone inputs and level control.
- ✓ Custom labelling of zones and inputs.
- ✓ Record to, or load announcements from SD card for recall and playback.
- ✓ Choose button colour theme.
- ✓ Wallplates- A4461 & A4462 - Connects via economical Cat5e UTP cabling.

**ADDITIONAL FEATURES FOR A4580**

---

- ✓ Simple touchscreen paging control of up to 32 zones(\*).
- ✓ All Call Paging.
- ✓ Store multiple zones to a single button for quick paging.
- ✓ Adjust custom labelling of zones and installer label.
- ✓ Zone lockout feature.
- ✓ PTT activation available in momentary or alternate mode.

**ADDITIONAL FEATURES FOR A4489A**

---

- ✓ Simple touchscreen paging control.
- ✓ All Call Paging.
- ✓ Store multiple zones to a single button for quick paging.
- ✓ Adjust custom labelling of zones and installer label.
- ✓ Zone lockout feature.
- ✓ PTT activation available in momentary or alternate mode.
- ✓ Multiple sources for zone-selectable background music.

**COMPATIBLE REDBACK PRODUCTS**

---

- A 4450 4x4 Audio Source Matrix Mixer Switch
- A 4580 16 Zone Paging System Switch Box
- A 4580 32 Zone Paging System Switch Box (\*with addition of second A4580)
- A 4469 4 Zone Compact Paging Relay Box To Suit A4488
- A 4487 Single Line Out Box
- A 4489A 4 Zone Paging Relay Box To Suit A4488
- A 4595A School Lockdown Controller

#### 1.0 SETUP

The product will be supplied blank, and will need to be configured for use. Where possible, this process is automated (usually on newer Redback® products), requiring only user confirmation.

If a mistake is made in selection, the process can be aborted and reset at the final step (step 3 below). To abort the process continue until given a final "CONFIRM" / "CANCEL" choice, choose "CANCEL" and re-insert the SD card to try again.

#### First Use

Connect the paging console to the Redback® master unit. This may be a newer product such as the A 4450 or A 4460 or an older supported legacy product such as the A 4580 (Refer to the Redback website for compatible products).

System components are connected using "pin to pin" configuration RJ45 data cabling as shown below in figure 1. When installing ensure all connections are verified with a LAN cable tester before switching any system component on. A short Cat6 patch lead is supplied for setup if required.

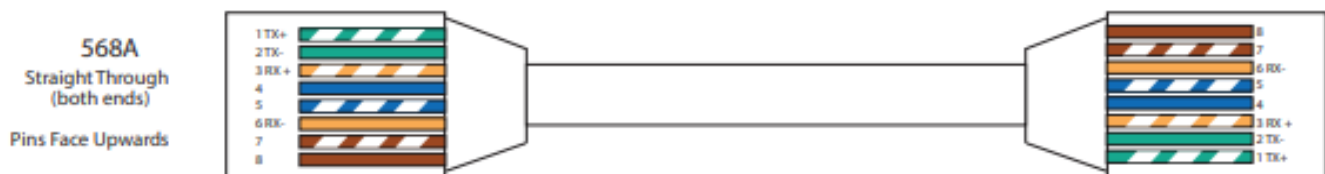


Fig 1

With the paging console connected as per the master unit instructions, power up the master unit.

#### Step 1:

A number of newer products (eg Redback® A4450, A4460, A 4650) support automatic detection, and this step will be automatically completed and user interaction skipped where available.

If automatic detection is not available, select the master unit the device is to be used with, from the presented list. If the master unit does not appear in the list, then it may NOT be compatible or the paging console may require an update. (Check the Redback website for compatible products and download a firmware update if available). Refer to section 2.0 for firmware updating instructions.

#### Step 2:

The next step is to select the paging console function. A number of different functional options may be available (e.g. 16 zone paging console or All call paging console), This list is specific to the master product. Refer to master product instructions for specifics of the available functions. Select the desired function from the presented list.

*Note: If only one option is available it will be automatically selected.*

#### Step 3:

With the master product and function now selected the unit will present a final confirmation, including information on the currently programmed image (if not blank) and the selected image to program. Select "CONFIRM" to continue or "CANCEL" to cancel.

If the loading is cancelled, the unit will halt until the SD card is re-inserted, and then reset and go back to step 1.

If confirmed, the loading process will begin and a progress bar will show completion.

Once loading is complete, the user will be notified if the loading succeeded or failed. If loading is successful the user will be asked to remove the SD card.

Once the SD card is removed the unit will start after a 5 second hold.

#### 1.0 WALL PLATE CONNECTION GUIDE

Figures 1 and 2 show the connection details of the wall plates. The location of the Micro SD card and RJ45 connectors are shown.

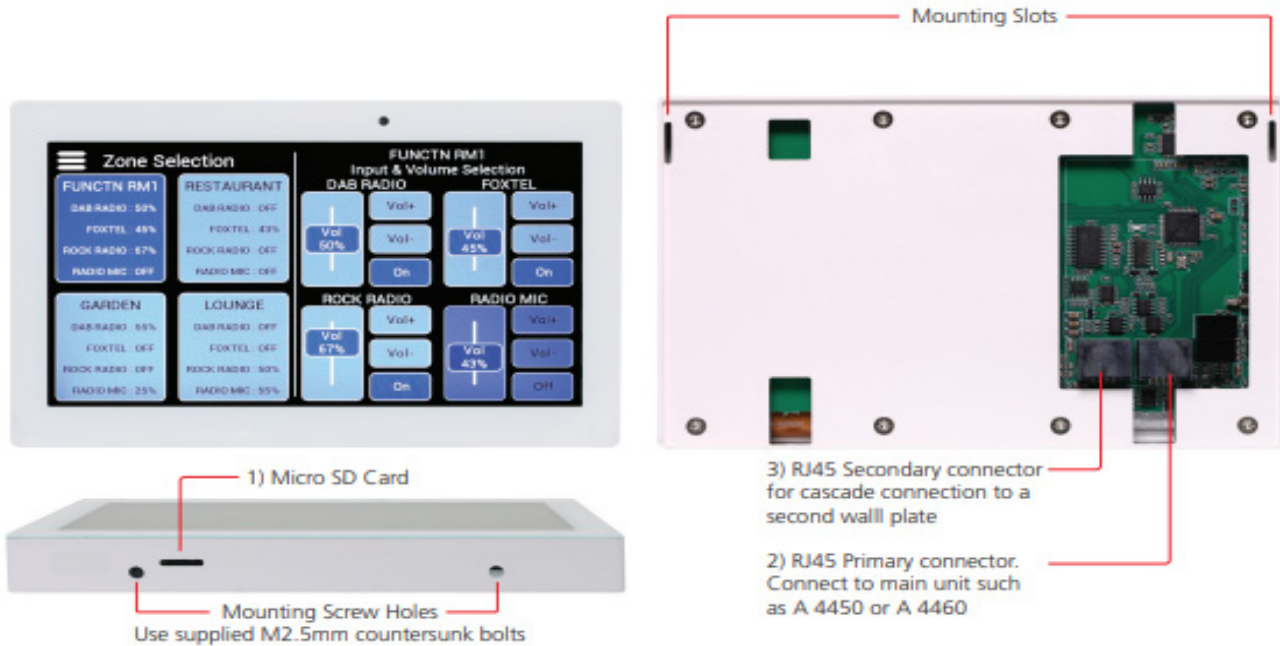


Fig 1. A 4461 and A 4463 connections

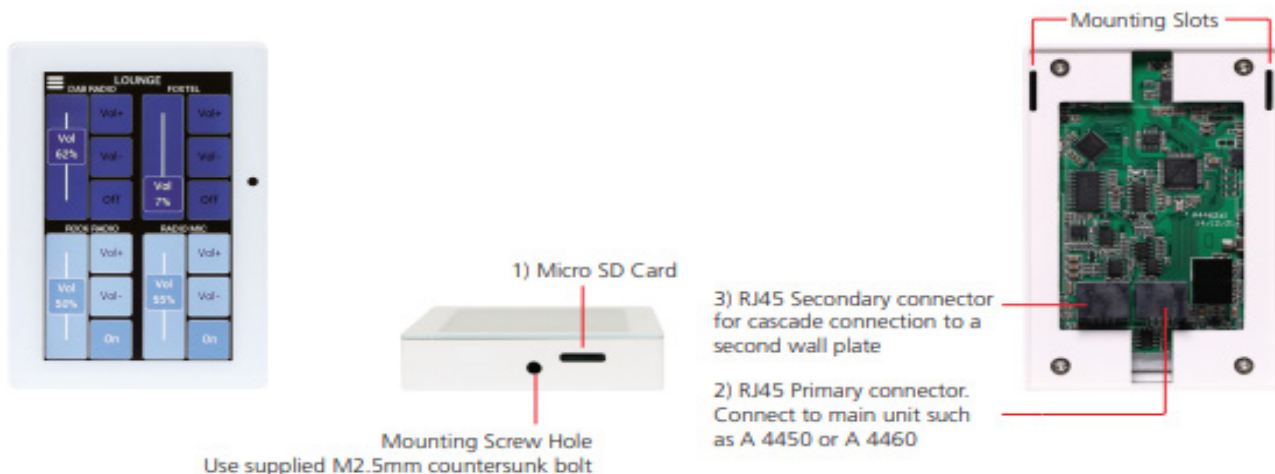


Fig 2. A 4462 and A 4464 connections

- 1 Micro SD Card**  
The SD card is used for firmware updates only (Note: The Micro SD Card is inserted with the contacts facing the rear of the wall plate).
- 2 RJ45 Primary Connector**  
This is used for the connection between the wallplate and the main controller such as the Redback A 4450 or A 4460. Connection is made using Cat5/6 cable to a maximum distance of 200m.
- 3 RJ45 Secondary Connector**  
This is used when cascading two plates. When connecting two plates on a single cable run, connect from this port on plate 1 to the primary connector on plate 2. The combined cable run distance from the master unit to the cascaded plate should not exceed 200m.

## 2.0 WALL PLATE MOUNTING BRACKET

Figures 3 and 4 show the mounting brackets to suit the two different size wall plates.

The brackets are designed to fit Australian standard electrical wall boxes in single gang and/or double gang.

To mount the wall plate to a wall box use the supplied 32mm x 6/32 threaded screws. If not using a wall box then mount the bracket using screws suitable for the mounting surface (not supplied).

To fit the wall plate to the mounting bracket, first insert the hooks at the top of the bracket into the mounting slots on the back of the wall plate. Then push the bottom of the wall plate against the wall making sure the bottom of the bracket fits into the cutout/s on the rear of the wall plate. Using the supplied countersunk M2.5mm bolt/s, secure the plate to the bracket (Note: the bolt/s will pull the plate upwards so that the hooks at the top of the bracket fit tightly into the wall plate).

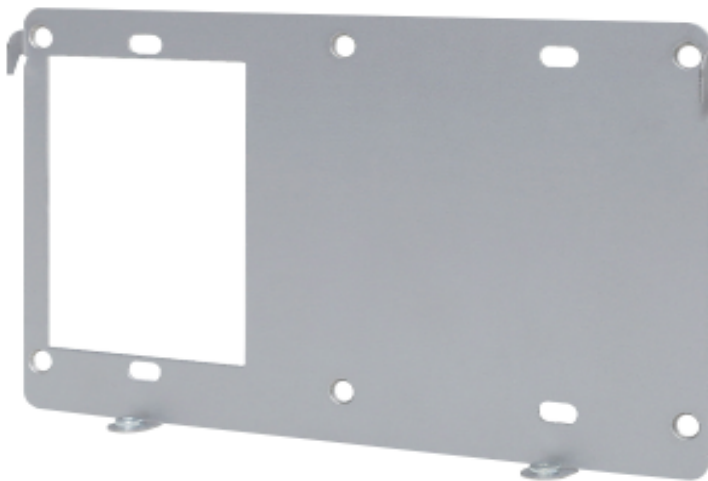


Fig 3



Fig 4

## 3.0 SETUP

The product will be supplied blank, and will need to be configured for use. Where possible, this process is automated (usually on newer Redback® products), requiring only user confirmation.

If a mistake is made in selection, the process can be aborted and reset at the final step (step 3 overleaf). To abort the process continue until given a final "CONFIRM" / "CANCEL" choice, choose "CANCEL" and re-insert the SD card to try again.

### First Use

Connect the wall plate to the Redback® master unit. This may be a newer product such as the A 4450 or A 4460 or an older supported legacy product (Refer to the Redback website for compatible products).

System components are connected using "pin to pin" configuration RJ45 data cabling as shown below in figure 5. When installing ensure all connections are verified with a LAN cable tester before switching any system component on.

A short Cat6 patch lead is supplied for setup if required.

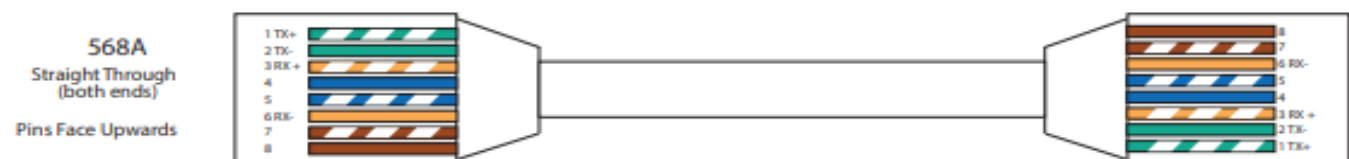


Fig 5

With the wall plate connected as per the master unit instructions, power up the master unit.

**Step 1:**

A number of newer products (eg Redback® A4450, A4460, A 4650) support automatic detection, and this step will be automatically completed and user interaction skipped where available.

If automatic detection is not available, select the master unit the device is to be used with, from the presented list. If the master unit does not appear in the list, then it may NOT be compatible or the wall plate may require an update. (Check the Redback website for compatible products and download a firmware update if available). Refer to section 4.0 for firmware updating instructions.

**Step 2:**

The next step is to select the wall plate function. A number of different functional options may be available (e.g. Master Plate or Zone Plate), This list is specific to the master product. Refer to master product instructions for specifics of the available functions. Select the desired function from the presented list.

*Note: If only one option is available it will be automatically selected.*

**Step 3:**

With the master product and function now selected the unit will present a final confirmation, including information on the currently programmed image (if not blank) and the selected image to program.

Select "CONFIRM" to continue or "CANCEL" to cancel.

If the loading is cancelled, the unit will halt until the SD card is re-inserted, and then reset and go back to step 1.

If confirmed, the loading process will begin and a progress bar will show completion.

Once loading is complete, the user will be notified if the loading succeeded or failed. If loading is successful the user will be asked to remove the SD card.

Once the SD card is removed the unit will start after a 5 second hold.

## 4.0 FIRMWARE UPDATES

If an update is available for a particular function, download and place the supplied ".bin" file on the root folder of a Micro SD card and insert into the unit. Reset the system via the wall plate menu (Menu->System Actions->Reset, for most products).

The wall plate will reset, scan the micro SD card and find the update and then present a confirmation screen providing information on the currently loaded and updated program. Select "CONFIRM" to continue.

The update file will not be deleted from the SD card on completion, and hence can be used to update multiple units.