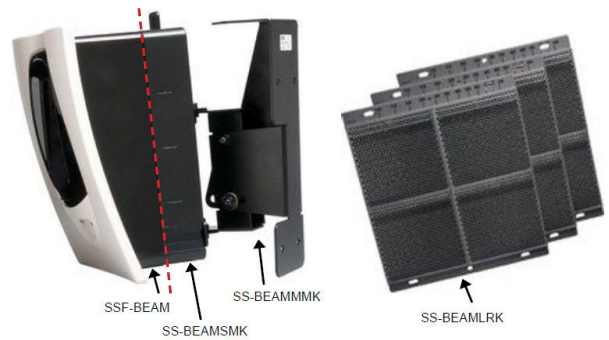


SSF-BEAM FlashScan Analog Addressable Beam Detector

FEATURES

- ✓ Controlled and powered by addressable loop
- ✓ 5m to 70m range (increased to 100m with LRK)
- ✓ Single ended RX, TX with reflector
- ✓ Loop powered
- ✓ Loop controlled (no modules required)
- ✓ 6 User Selectable sensitivity levels
- ✓ Digital display for fast alignment
- ✓ Remote switch test feature available
- ✓ Surround and front escutcheon can be painted to blend in with the surroundings



*Mounting kits and long range kit sold separately

PRODUCT DESCRIPTION

FireSense SSF-BEAM is an intelligent Flashscan™ addressable projected beam smoke sensor. It is uniquely suited for protecting open areas with high ceilings where other methods of smoke detection are difficult to install and maintain. Alignment is quickly accomplished via an optical sight and a 2-digit signal strength meter incorporated into the product. This is for use with both the 2800 & 3030 fire alarm panels.

Listed for operation from -30°C to 55°C, SSF-BEAM can be used in open area applications to provide early warning in environments where temperature exceed the capability of other types of smoke detection.

SSF-BEAM consists of a transmitter/receiver unit at the head end and a reflector. When smoke enters the area between the unit and the reflector, it causes a reduction in the signal and when the smoke level reaches the predetermined threshold, an alarm is activated.

SSF-BEAM has four standard sensitivity selections along with two Acclimate settings. When either of the two Acclimate settings is selected the detector will automatically adjust its sensitivity using advanced software algorithms to select the optimum sensitivity for the specific environment.

**Surface mount kit and multi mounting kit must be purchased separately.*

CABLING REQUIREMENTS

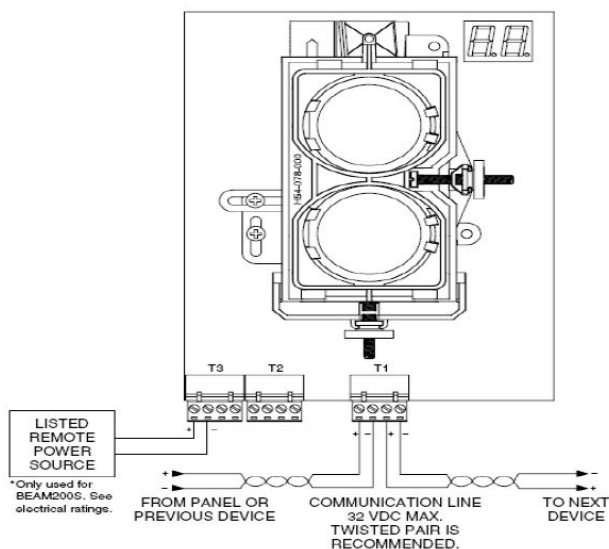
SSF-BEAM	Controlled and powered via addressable loop
SSF-BEAM(S) With Remote Test Facility	Controlled via addressable loop External 24Vdc required for testing function

SSF-BEAM FlashScan Analog Addressable Beam Detector

ORDERING INFORMATION

SSF-BEAM	FlashScan/CLIP Beam detector with reflector.
SS-BEAMLRK	Long range kit to increase range to 100m. 3 additional reflectors to be used in conjunction with original reflector.
SS-BEAMMMK	Multi-Mounting kit. Requires surface mount kit to be fitted first. Cannot be used with LRK.
SS-BEAMSMK	Surface mount kit
SS-BEAM-TKEY	System Sensor RTS451 test key for beam detector

CONNECTION INFORMATION



APPROVALS

- ✓ SSL Approved
- ✓ ActivFire certified - Listing No. afp-2083 (Notifier Model FSB200)